
CamSIS Connect Pre-Installation

Document Control Details

Ref.	Author:	Date Created:	Comments:
1	Elena Doyle	18 November 2008	First draft

User Access

Please note that in order to be able to use the tool you need to have access to OBI first.

Additionally you would need to be allowed to access OBI using CamSIS Connect.

Please contact helpdesk to have it arranged if you have not already done so.

User Access	1
Preparing infrastructure for running CamSIS Connect	1
Step 1 Install correct version of java.....	1
Step 2 Ensure database access.....	3
Step 3 Allow email notifications to be sent	3

Preparing infrastructure for running CamSIS Connect

Step 1 Install correct version of java.

You will need Java JRE 1.5 or later.

You also need it to be in your path.

In order to find out if you have the right version of java, type in command prompt:

java -version, you should have output looking like this:

```
java version "1.6.0_07"
```

```
"Java(TM) SE Runtime Environment (build 1.6.0_07-b06)
```

```
Java HotSpot(TM) Client VM (build 10.0-b23, mixed mode, sharing)"
```

If you do not have java installed or it is not configured to run java at the command prompt you will have instead:

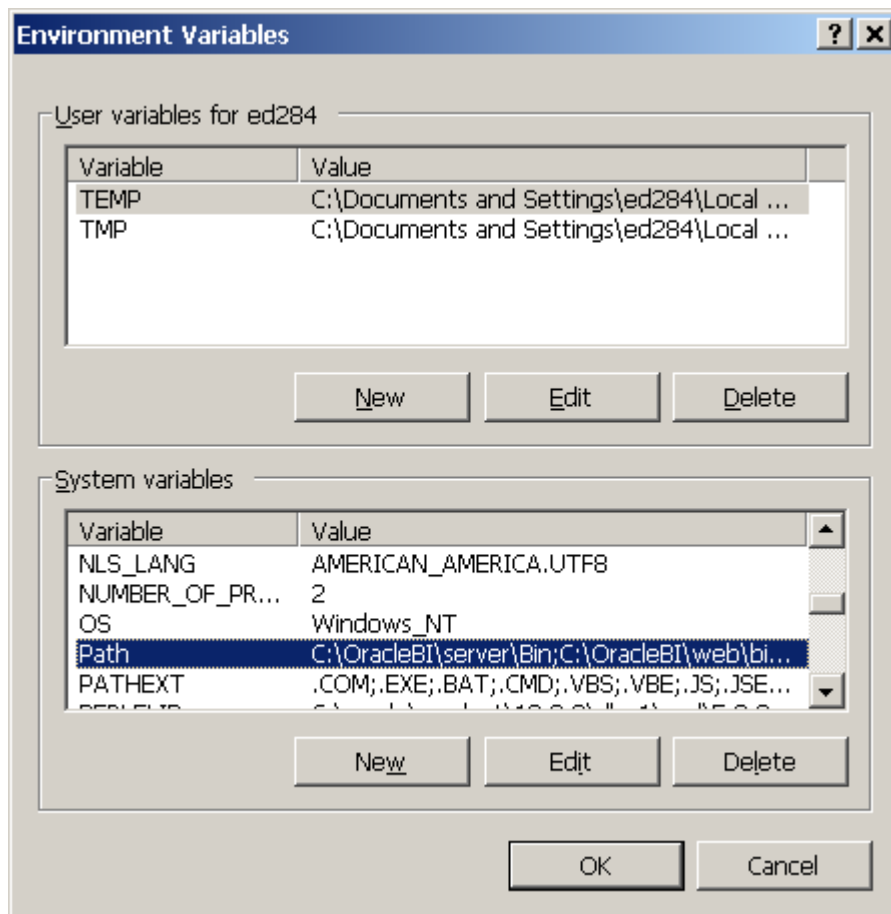
```
"java is not recognized as an internal or external command, operable program or batch file"
```

If not installed already then download and install from:

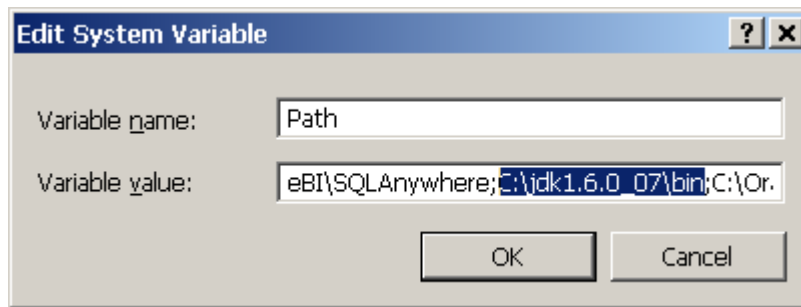
<http://java.sun.com/javase/downloads/index.jsp>

Then make sure it is in your path.

For example on Windows, if you installed JRE into C:\jdk1.6.0_07\bin you need to go to your computer properties, select advanced tab, click Environment Variables, select Path in your system variables



Click edit and add it to the string.



If you had an older version of JRE you need to make sure the latest version overrides it or is first in the list at least.

Step 2 Ensure database access

A working username and password to a schema on local database of your choice is required.

Currently supported and tested: SQL Server 2005, SQL Server Express 2005, Oracle9i, Oracle 10G, Oracle 11G, MySQL 5.0.

Potentially this can work with a wide range of database platforms.

It is recommended that the database you use is in UTF-8 character set.

For Oracle users please also ensure that your `nls_length_semantics` parameter is set to `char`, not `byte`.

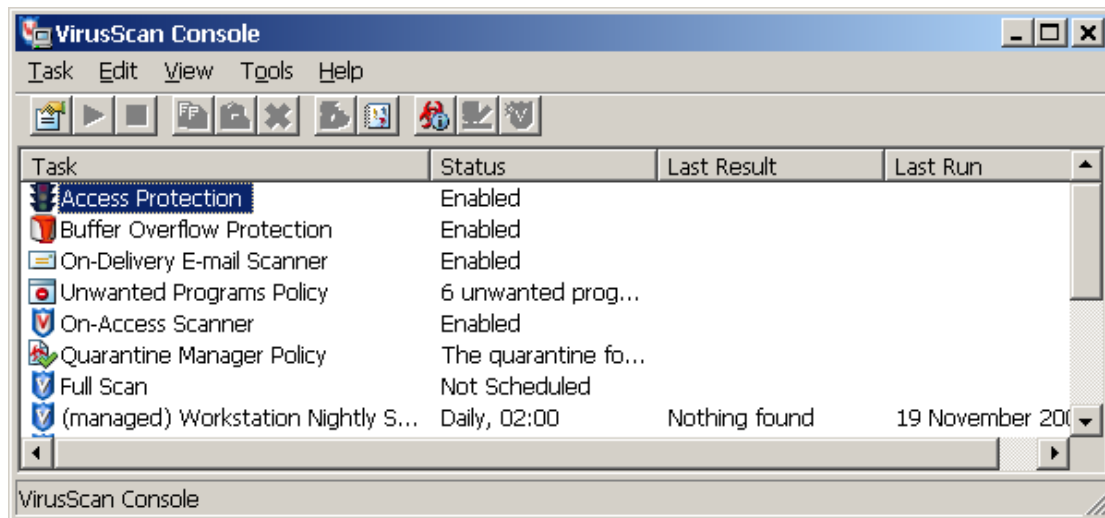
Access to the database is via TCP/IP, so you will need to make sure your database is accessible.

Step 3 Allow email notifications to be sent

In order for the program to send email notifications, the server needs to be able to access an email server. You can use `ppsw.cam.ac.uk` server or a server on you local network.

If you are running McAfee Anti-Virus Software, you also need to make sure that `java.exe` is allowed to send an email.

Go to Virus Scan Console, right click on Access Protection,



select on the right under rules: Prevent mass mailing worms from sending mail, click edit and add java.exe to the list and apply.

You should now be able to install CamSIS Connect.