

---

## CamSIS Connect Installation and Maintenance

### Document Control Details

Ref.	Author:	Date Created:	Comments:
1	Elena Doyle	18 November 2008	First draft
2	Matt Emmerson	08 November 2021	Updates

### User Access

Please note that in order to be able to use the tool you need to have access to OBI first.

Additionally you would need to be allowed to access OBI using CamSIS Connect.

Please contact helpdesk to have it arranged if you have not already done so.

You would also need to prepare the infrastructure as per CamSIS Connect Pre-Installation Instruction.doc

<b>User Access .....</b>	<b>1</b>
<b>Installing CamSIS Connect .....</b>	<b>2</b>

Step 1 Obtaining the software.....	2
Step 2 Configuring parameter file .....	4
Step 3 Building the tables.....	5
Step 4 Running incremental updates.....	6
Step 5 Options in BAT file.....	7

## Installing CamSIS Connect

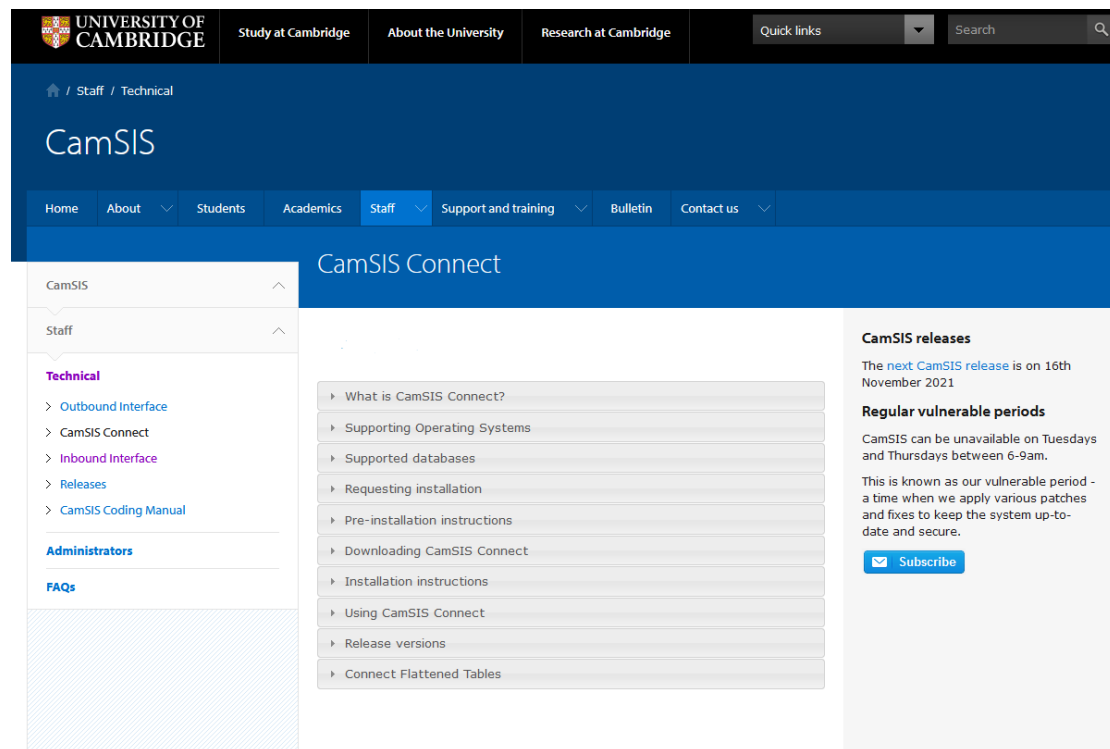
### Step 1 Obtaining the software.

Create a folder where you would like to install Connect. The default is c:\csconnect for Windows users, but you can choose to install it anywhere you want and if you are going to use the bat file provided then you will need to modify the bat file accordingly.

Go to the download page

<https://www.camsis.cam.ac.uk/camsis-connect>

Log in using Raven user name and password



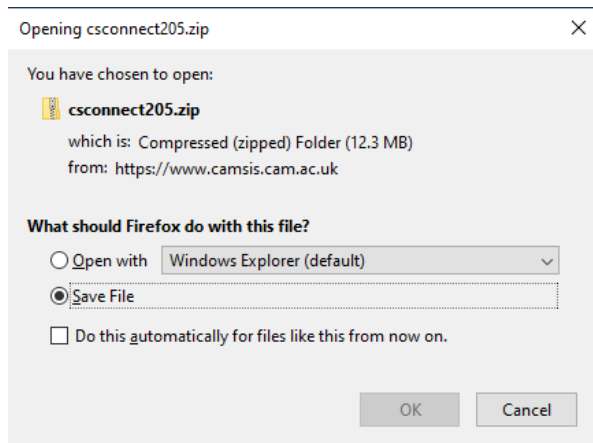
Click on “Downloading CamSIS Connect” and the accordion should expand.

Downloading CamSIS Connect

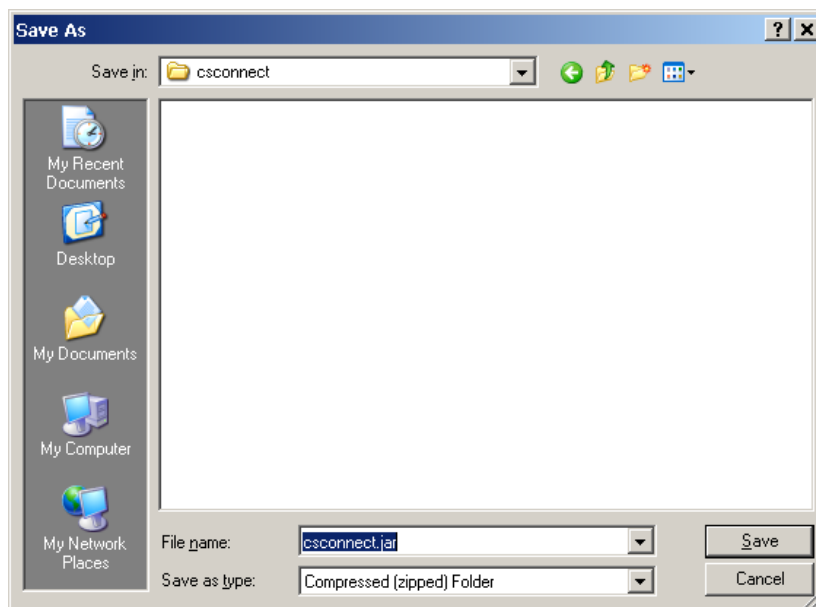
The current version of Connect is 2.05 using java 1.8.

Connect 2.06 ( <i>beta version</i> )	ZIP
Connect 2.06 installation script ( <i>beta version</i> )	TXT
Connect 2.05 ( <i>current stable version</i> )	ZIP
Connect 2.05 installation script	TXT
Connect 2.04	ZIP
Connect 2.04 installation script	TXT
Connect 2.03	ZIP
Connect 2.03 installation script	TXT
Connect 2.02	ZIP
Connect 2.02 installation script	TXT
Connect 2.00	ZIP
Initial Setup Files	ZIP

Click on the current version link and select save. Please note that it will appear to you as *csconnect-version number.zip*.



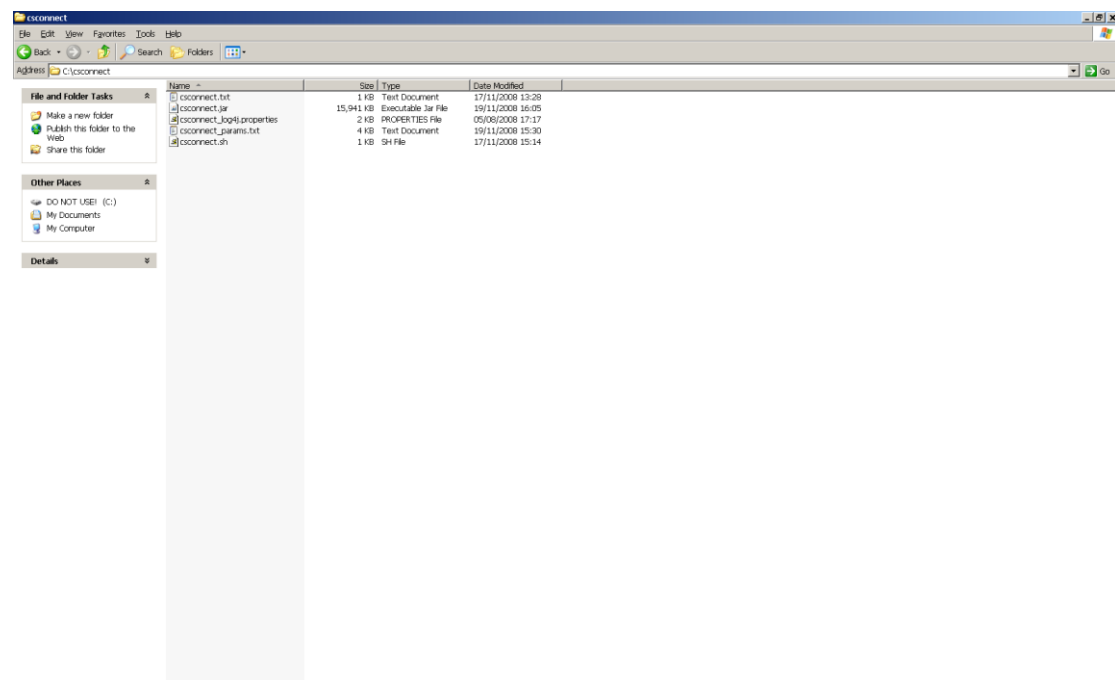
Save it as *csconnect.jar* in the folder you just created or rename it once downloaded.



Again, you can call it any other name you want, as long as it has .jar extension, but then you would need to modify the bat file or the shell script if using those.

The download “Initial Setup Files” csconnect.zip and unzip its contents into csconnect directory.

Your directory should now look like this:



If you are a Windows user and would like to use the bat file, please rename csconnect.txt to csconnect.bat

## **Step 2 Configuring parameter file**

You now need to modify csconnect\_params.txt to reflect your local circumstances.

The details you will need are:

- your obi username and password
- your local database username and password
- your local database connection string, sample strings are provided currently for Oracle, SQL Server, MySQL and PostgreSQL
- the appropriate driver class, again simply uncomment the driver you are using
- appropriate hibernate dialect, uncomment the one you want
- email server, you can leave ppsw.cam.ac.uk as default
- email address of the person who will be receiving emails reporting progress

- email address the email should come from, you can leave [cconnect@admin.cam.ac.uk](mailto:cconnect@admin.cam.ac.uk) by default
- list of main tables, so you can include, exclude tables you are interested in if you like
- list of prompt tables

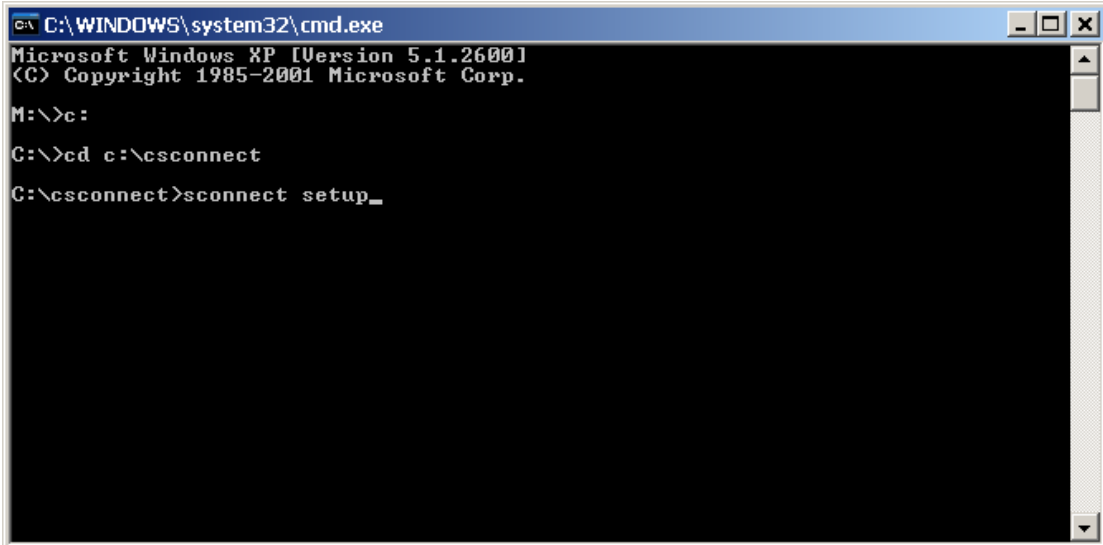
Please note do not leave spaces above the first table in the list, especially if using linux.

You should now be ready to run the program.

### ***Step 3 Building the tables***

Windows user

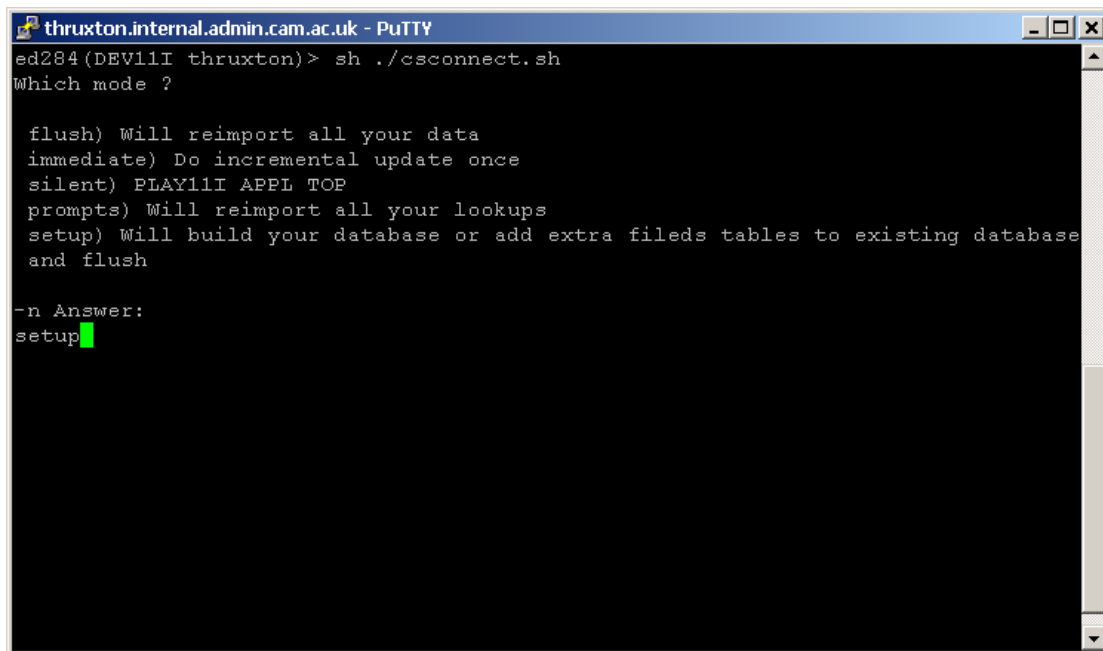
Please go to command prompt, change to the directory where you installed cconnect and type and run the bat file with parameter setup



```
C:\WINDOWS\system32\cmd.exe
Microsoft Windows XP [Version 5.1.2600]
(C) Copyright 1985-2001 Microsoft Corp.

M:\>c:
C:\>cd c:\cconnect
C:\cconnect>sconnect setup_
```

Linux users, if using shell script, run the script and answer setup



```
thruxton.internal.admin.cam.ac.uk - PuTTY
ed284 (DEV11I thruxton)> sh ./csconnect.sh
Which mode ?

flush) Will reimport all your data
immediate) Do incremental update once
silent) PLAY11I APPL TOP
prompts) Will reimport all your lookups
setup) Will build your database or add extra fields tables to existing database
and flush

-n Answer:
setup
```

It should build all the tables and populate them with data.

### ***Step 4 Running incremental updates***

After you have installed and populated your database you normally would run

Connect in incremental update mode.

Incremental updates can be done in two ways.

- Immediate mode

Type immediate instead of setup (see step 3)

If you run it in immediate mode the program will look for any changes that happened since last time and bring them across. It will also send you an email with the details unless you cancel that specifically.

The details of the update will also be recorded in the csconnect\_log.txt file.

- Silent mode

Type silent instead of setup (see step 3)

If you run silent mode the program will repeat what immediate mode does every hour between 6 am and 8 pm according to the slot you have been allocated.

It will send you an email each time. Or you can only get one email during the run between 9 and 10am. As silent mode runs in the background the email will also tell you how many successful or unsuccessful sessions you had in the last 24 hours.

***When running either of these modes prompt tables (tables ending \*\_P) do not get updated. You must run prompts mode to update these tables***

## Step 5 Options in BAT file

### Explanation of Calls

**java -Xmx -jar** references java run time and allocates 1536Mb of memory to the process. This can be made bigger if required. Some departments require 8Gb due to volume of data.

**cconnect.jar** – is the name of the java file

**MFlush** – deletes data from your local tables and reimports all data from CamSIS

**Mimmediate** – Imports all new data since your last run (this can sometimes miss data with older effective dates than your last run. If students are missing then running flush mode will fix this)

**MPrompts** – refreshes all \*\_P tables which are not done within flush or immediate mode.

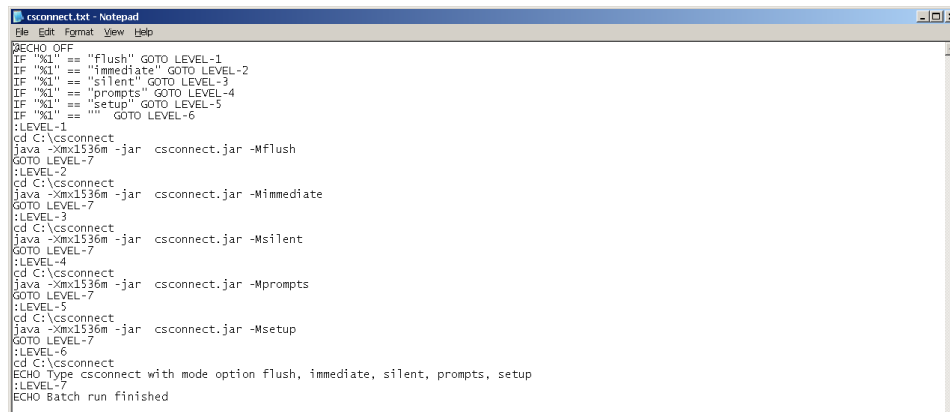
**Mupdatetable** – can be used to update a singular table (explanation further down)

**Mprompts** – can be used to update singular prompt (explanation further down)

### Switching Email Off

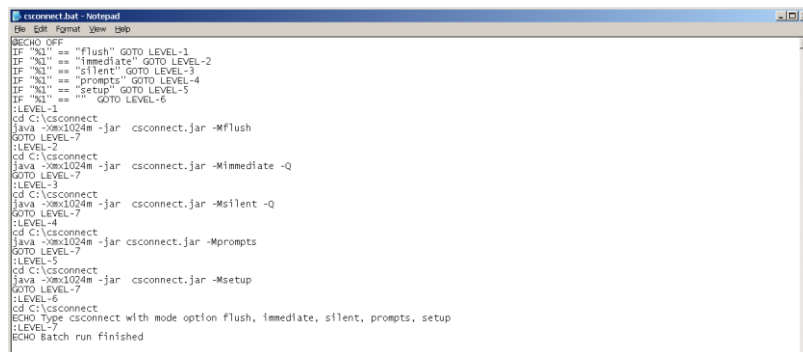
Email can be disabled by modifying bat file or shell script.

For example your bat file by default will look like this:



```
cconnect.bat - Notepad
File Edit Format View Help
@ECHO OFF
IF "%1" == "flush" GOTO LEVEL-1
IF "%1" == "immediate" GOTO LEVEL-2
IF "%1" == "silent" GOTO LEVEL-3
IF "%1" == "prompts" GOTO LEVEL-4
IF "%1" == "setup" GOTO LEVEL-5
IF "%1" == "" GOTO LEVEL-6
:LEVEL-1
cd C:\cconnect
java -Xmx1536m -jar cconnect.jar -Mflush
GOTO LEVEL-7
:LEVEL-2
cd C:\cconnect
java -Xmx1536m -jar cconnect.jar -Mimmediate
GOTO LEVEL-7
:LEVEL-3
cd C:\cconnect
java -Xmx1536m -jar cconnect.jar -Msilent
GOTO LEVEL-7
:LEVEL-4
cd C:\cconnect
java -Xmx1536m -jar cconnect.jar -Mprompts
GOTO LEVEL-7
:LEVEL-5
cd C:\cconnect
java -Xmx1536m -jar cconnect.jar -Msetup
GOTO LEVEL-7
:LEVEL-6
cd C:\cconnect
ECHO Type cconnect with mode option flush, immediate, silent, prompts, setup
:LEVEL-7
ECHO Batch run finished
```

If you add **-Q** at the end of lines ending with immediate or silent (those are the two modes that send emails), it will disable email in immediate mode altogether and only send once a day email in silent mode.



```

cscconnect.bat - Notepad
File Edit Format View Help
ECHO OFF
IF "%1" == "flush" GOTO LEVEL-1
IF "%1" == "immediate" GOTO LEVEL-2
IF "%1" == "silent" GOTO LEVEL-3
IF "%1" == "prompts" GOTO LEVEL-4
IF "%1" == "setup" GOTO LEVEL-5
IF "%1" == "" GOTO LEVEL-6
:LEVEL-1
cd C:\cscconnect
java -Xmx1024m -jar cscconnect.jar -Mflush
GOTO LEVEL-7
:LEVEL-2
cd C:\cscconnect
java -Xmx1024m -jar cscconnect.jar -Mimmediate -Q
GOTO LEVEL-7
:LEVEL-3
cd C:\cscconnect
java -Xmx1024m -jar cscconnect.jar -Msilent -Q
GOTO LEVEL-7
:LEVEL-4
cd C:\cscconnect
java -Xmx1024m -jar cscconnect.jar -Mprompts
GOTO LEVEL-7
:LEVEL-5
cd C:\cscconnect
java -Xmx1024m -jar cscconnect.jar -Msetup
GOTO LEVEL-7
:LEVEL-6
cd C:\cscconnect
ECHO type cscconnect with mode option flush, immediate, silent, prompts, setup
:LEVEL-7
ECHO Batch run Finished

```

## Debug Mode

Another option is to add **-D** and the screen output will be redirected to files

cscconnect\_debugErr.txt

cscconnect\_debugOut.txt

## Updating Singular Tables

Syntax from the \*.bat file can be manipulated to update singular tables

**Mupdatetable -UT *tablename* -US** – update the schema and a single table

```
java -Xmx1536m -jar cscconnect.jar -Mupdatetable -UTUIEX -US
```

**Mprompts -UT *promptname* -US** – update the schema and a prompt table

```
java -Xmx1536m -jar cscconnect.jar -Mprompts -UTETHNIC_P -US
```